

Providence
Schools

**BUILT TO LEARN
BUILT TO LAST**

PPSD Capital Plan
Updates

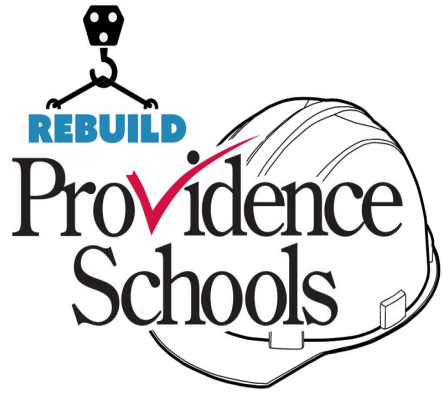
Fall 2024



Agenda

- Providence Schools Capital Plan Overview
- Current Lima School Planning

The Challenge & Opportunity



Our school buildings suffer from **decades of underinvestment** and ineffective band-aid fixes. With new funding opportunities and a strategic capital plan aligned with instructional programs, **transformational change** is happening.

Our goal: **We will have enough seats for all PPSD students to be in new or like-new facilities by 2030.**

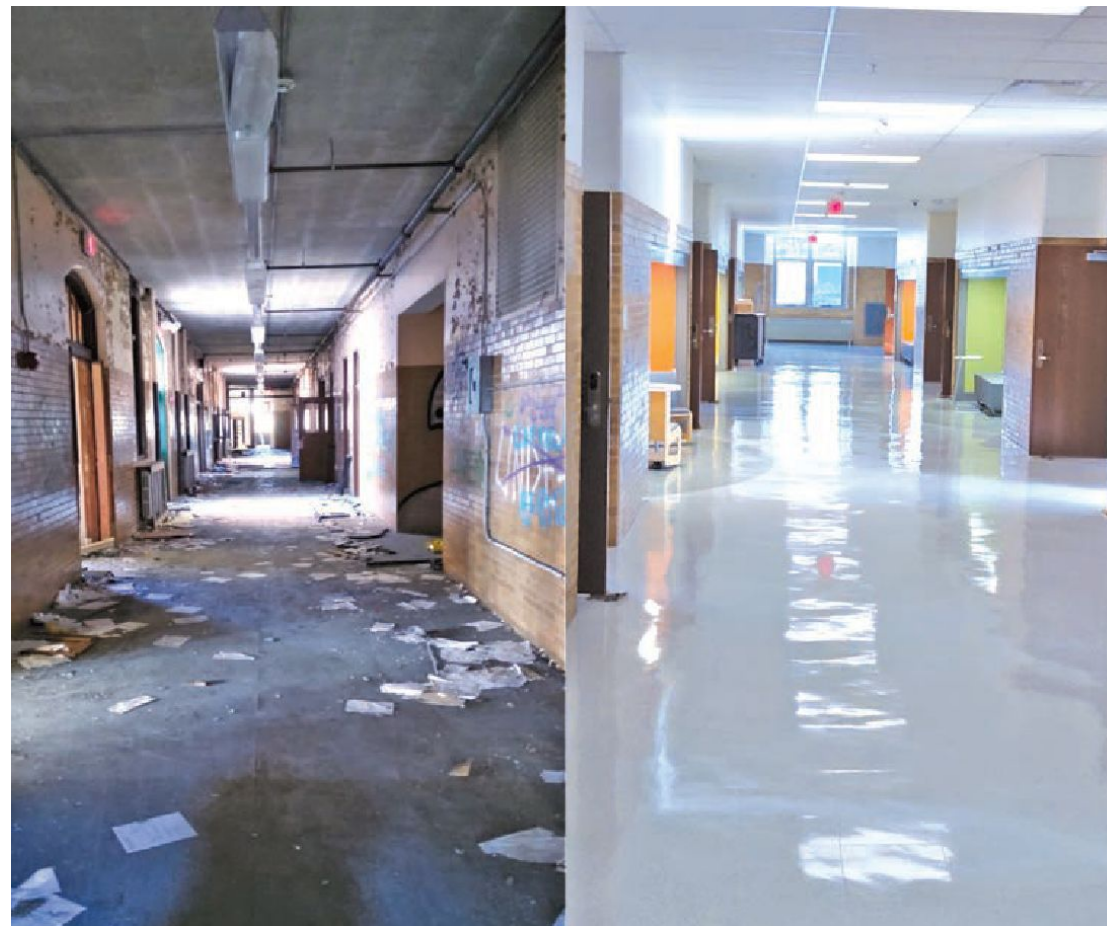
The next round of bond funding before the voters in November is a once-in-a-lifetime opportunity to get our students the buildings they deserve.



Capital Plan Priorities

We have a once-in-a-lifetime opportunity to raise expectations for what our students deserve.

- Big, **transformational projects** for entire schools
- **Reimagining the middle grades** experience with the Pre-K through 8 model and **expanded pre-kindergarten**
- **Newer and fewer** - right-size the number of buildings for Providence's current and projected enrollment
- Build **where families live**, and ensure all communities benefit from school construction



The abandoned Windmill Ave. school

Fully renovated Narducci Learning Center, reopened Fall 2023

Capital Plan Phases I – III

Exciting work is happening all across the city

Major projects completing construction

- New Pleasant View Elementary School open this year
- Classical High School renovations completing later this year
- Major work at Hope (dance studio) and JSEC (biomed lab) to support school's program redesign

New construction

- Harry Kizirian Elementary will reopen as Pre K through Grade 8 school in 2027
- Mary Fogarty Elementary will reopen as Pre K through Grade 8 school in 2027

In design

- Mount Pleasant Early College and Career High School
- Lima/Stuart Pre K-8 new building
- Asa Messer/West Broadway Pre K-8 new building



Dance studio construction at Hope High School



Two PPSD schools win US DOE Green Ribbon School award!

Capital Plan Phase 4: Projects Planned and Approved

Approved by City Council and School Building Authority, going before voters in November.

New Build or Like-New Renovation

Roger Williams PK-8

Robert F Kennedy PK-8

Martin Luther King K-5 and Early
Childhood Center

Nathaniel Greene PK-8

Hope High School

Vartan Gregorian K-5

Carnevale/DelSesto PK-8

Restore to New

Central High School

E-Cubed High School

Alvarez High School

Nathan Bishop 6-8

Bailey K-5

Young & Woods K-5

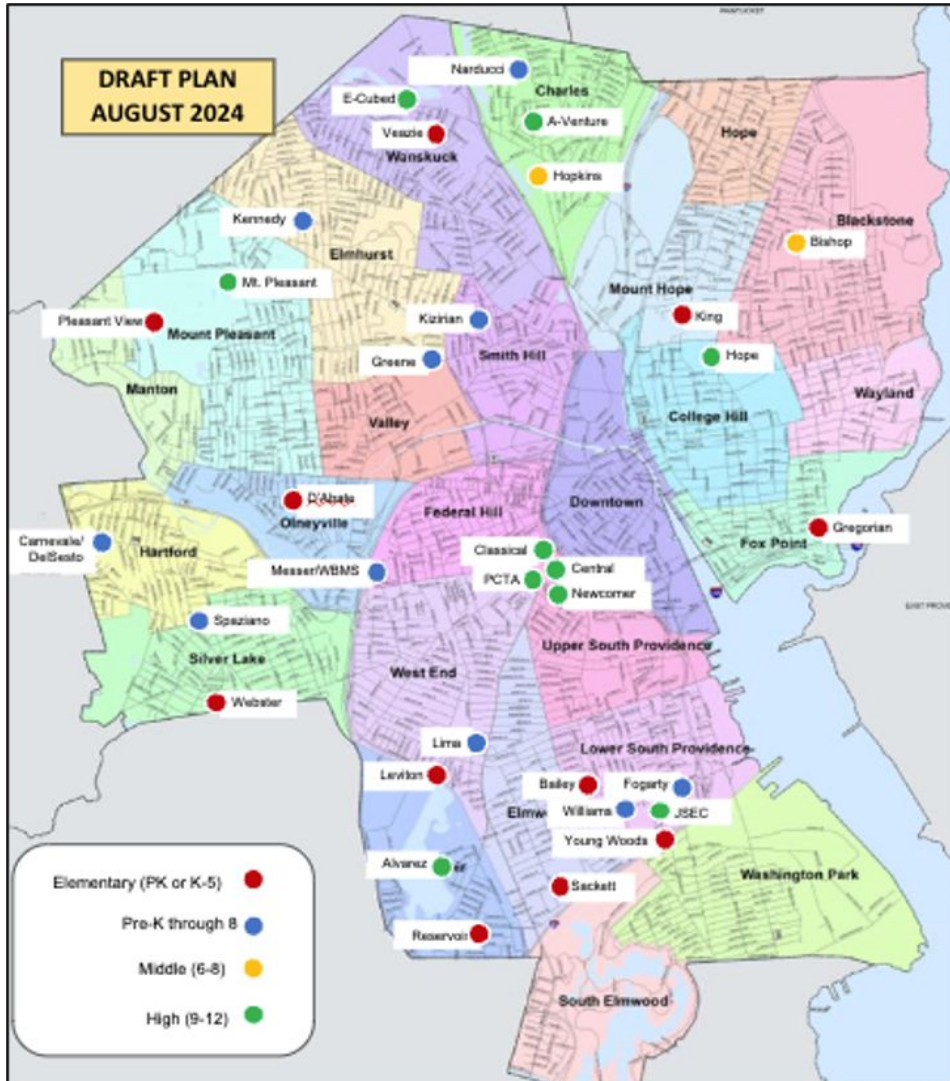
JSEC High School

Leviton Dual Language K-5

PCTA High

Providence School Buildings by 2030

Phase 4 provides opportunity to have enough seats in new or like new schools for all students



- 19,000 seats in new or like-new schools
- 19 new buildings and 9 restore to new buildings
- Removes up to 600,000 square feet in excess space, saving the district a minimum of \$3 million each year by end of construction
- Modern security and technology in all new and like-new buildings

Agenda

- Providence Schools Capital Plan Overview

- Current Lima School Planning

Lima School: Future Planning

- Approved by City Council and School Building Authority for a **\$62.5M investment**
- **New build** on site of former Stuart school, adding Pre-K and Grades 6 - 8
- Design **driven by program needs** to support teaching model

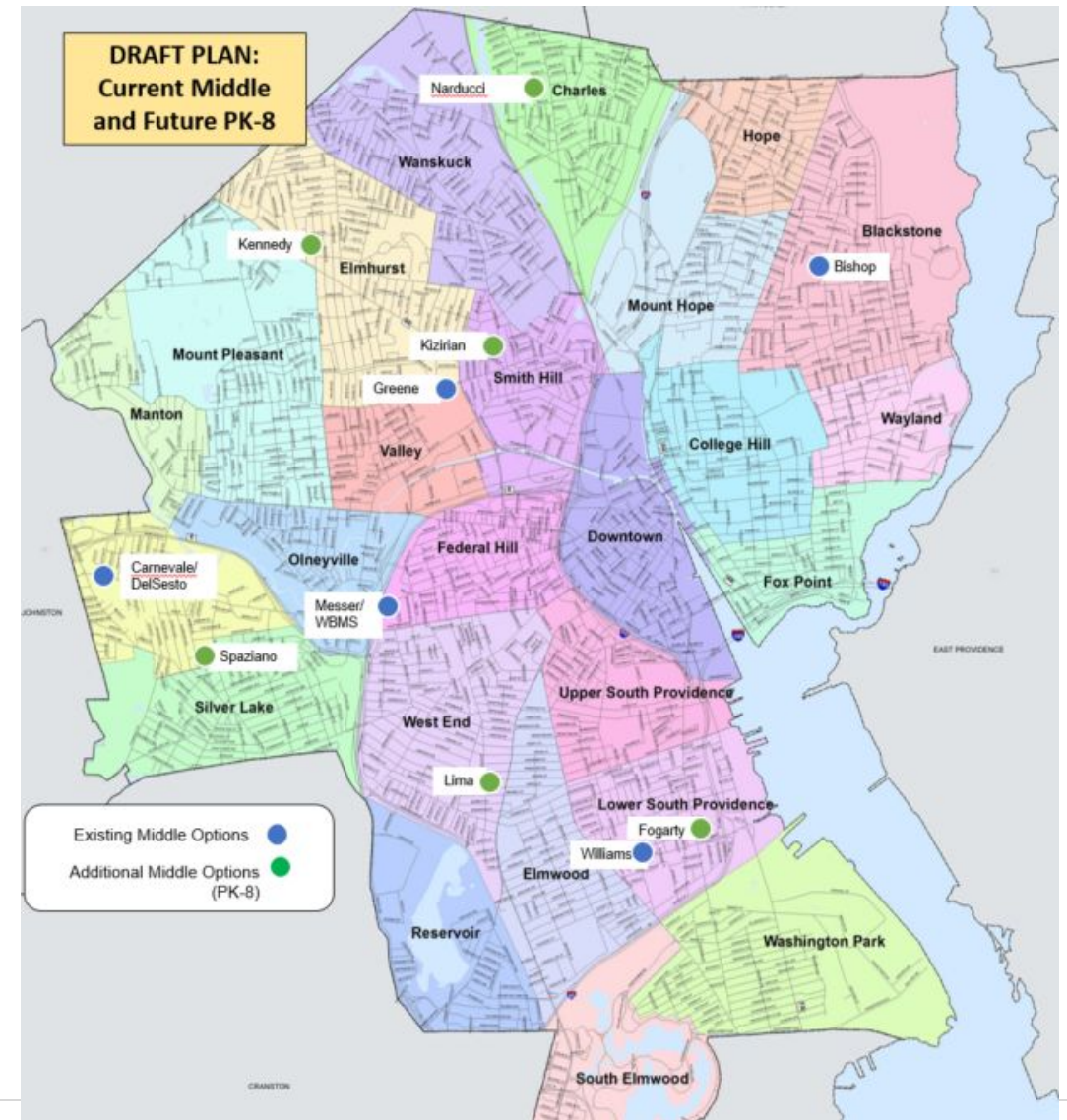


Spotlight: Pre-K through 8 Schools

A shift toward a longer-term school communities, closer to home.

Research shows that the PK-8 model supports a **stronger school community**, allowing more **robust relationships** between staff, students, and families.

- **Decrease middle school size** from 300 to 100 students per grade
- Expand middle school options from 6 to 11 schools, bringing **middle school closer to home**
- Increase number of years in elementary community from six to ten – students will build **relationships from 4 to 14 years old**
- Keep **siblings together** for longer
- Responds to **community demand for change**



Reimagine the middle school experience

Thoughtfully designed school buildings to support students and community

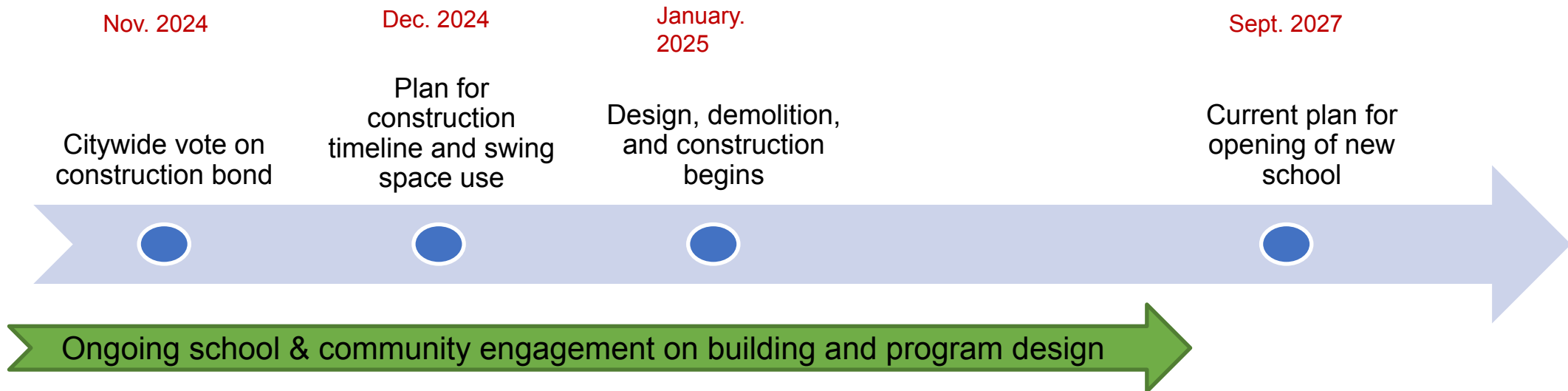
Examples of Programmatic & Building Supports

- **Separate areas** for each age level:
 - Bathrooms
 - Play spaces
 - Entrances
 - Common areas/lockers
- Shared spaces to **maximize resources** and **build community**:
 - Auditorium
 - Gym
 - STEM, art, and music rooms



Lima School: Timeline & Design Decisions

- Construction to occur on site of Gilbert Stuart, estimated to take 2 school years
- Once construction complete, students would relocate from current school site to new site at Gilbert Stuart



- District and school academic team to work with school community on program design
- Design firm to work with school community and district on project scope and building design

Lima School: Quick Poll

Join at menti.com | use code 21 44 86 9

 Mentimeter

Instructions

Go to

www.menti.com

Enter the code

21 44 86 9



Or use QR code

Feedback & Questions

